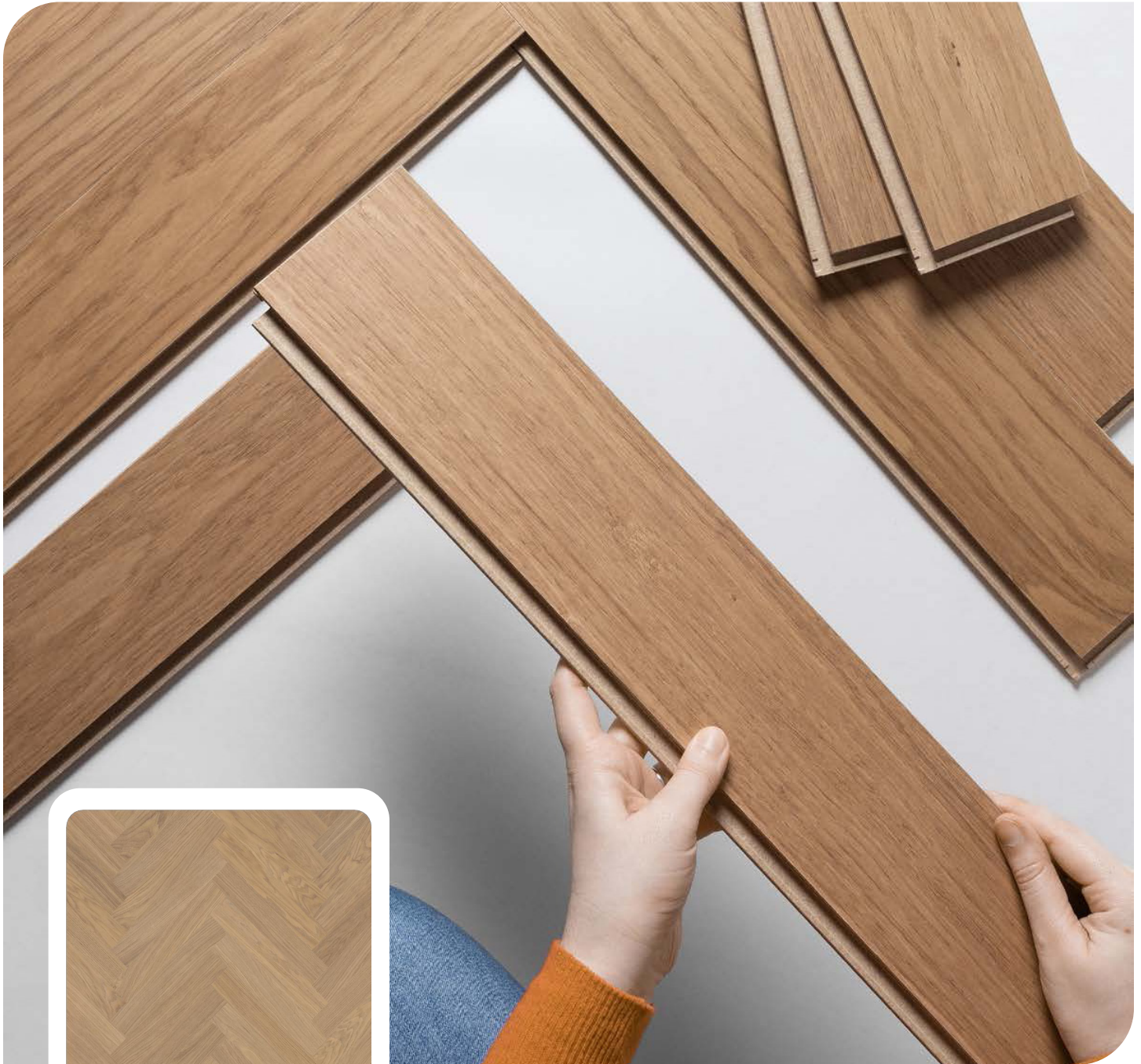


GBS Herringbone Hardwood



Natural



GREEN BUILDING SUPPLY

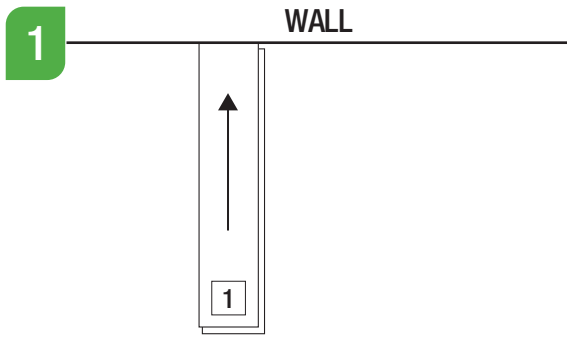
SAFE ■ SUSTAINABLE ■ SMART

Installation Instructions

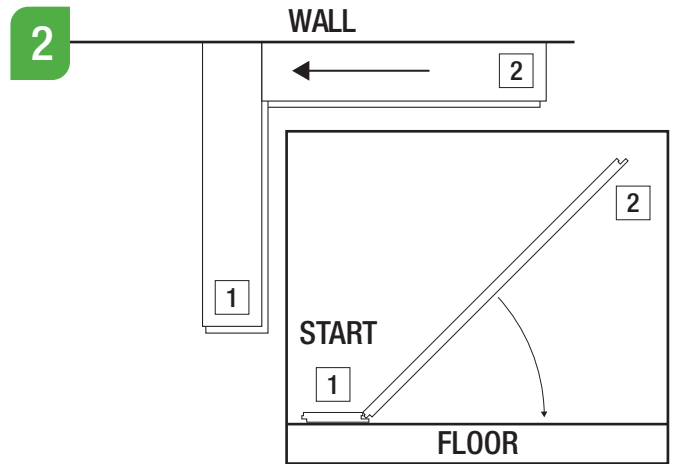
GreenBuildingSupply.com | Talk To An Eco Advisor 866.421.7168

Installation Instructions

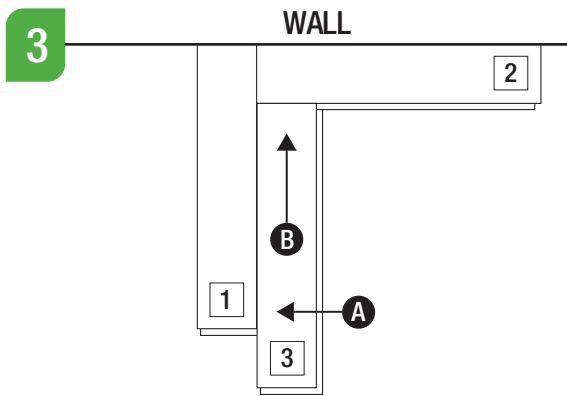
CLICK IT TOGETHER



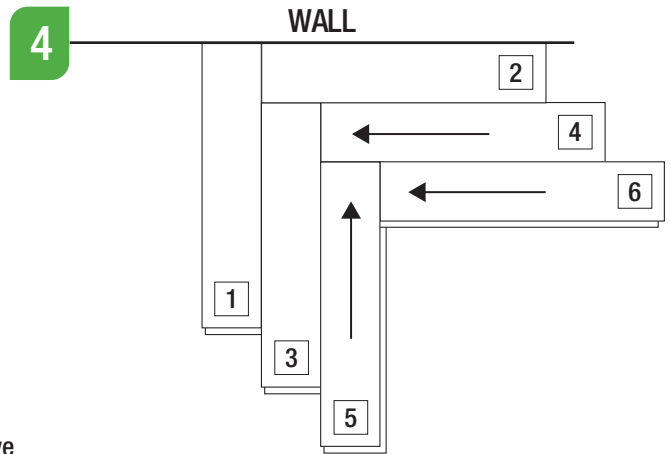
Place Board #1 perpendicular against a wall.



Place Board #2 at an angle and insert it against Board #1. Apply pressure towards #1 while snapping down. Seam should be tight.

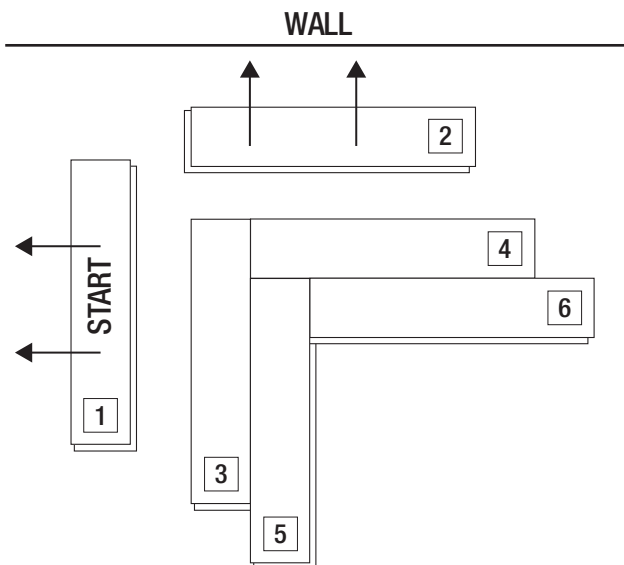


- A** Place the long side of Board #3 at an angle in the groove of Board #1.
- B** Slide it along Board #1 until it runs into Board #2.
- C** Continue putting pressure against the two boards as you snap it down into place.



Repeat with boards #4, #5, #6.

TAKE IT APART



QR
CODE

GreenBuildingSupply.com

Talk To An Eco Advisor
866.421.7168