

# ENVIRONMENTALLY FRIENDLY

## MODELS



ZF-101



ZF-201



ZF-301



ZF-401



ZF-501

### ZeroFlush® Model ZF-101 ADA Compliant

Vitreous China No-Water Wall Hung Urinal with integral housing and drain insert.

**Dimensions:** 19" W x 28" H x 15.5" D

**Rough-In:** For 24" lip height, drain center line must be 17" from floor

**Approximate Weight:** 60 lbs. **Color:** White

### ZeroFlush® Model ZF-201 ADA Compliant

Vitreous China No-Water Wall Hung Urinal with integral housing and drain insert.

**Dimensions:** 15.9" W x 24.8" H x 15.5" D

**Rough-In:** For 24" lip height, drain center line must be 17" from floor

**Approximate Weight:** 40 lbs. **Color:** White

### ZeroFlush® Model ZF-301 ADA Compliant

Vitreous Stainless Steel No-Water Wall Hung Urinal with integral housing and drain insert.

**Dimensions:** 18.75" W x 31" H x 15" D

**Rough-In:** For 24" lip height, drain center line must be 17" from floor

**Approximate Weight:** 40 lbs. **Color:** 304 Stainless Steel

### ZeroFlush® Model ZF-401 ADA Compliant

Vitreous China No-Water Wall Hung Urinal with integral housing and drain insert.

**Dimensions:** 15.5" W x 27.5" H x 14.5" D

**Rough-In:** For 24" lip height, drain center line must be 16" from floor

**Approximate Weight:** 45 lbs. **Color:** White

### ZeroFlush® Model ZF-501 ADA Compliant

Vitreous China No-Water Wall Hung Urinal with integral housing and drain insert.

**Dimensions:** 13.25" W x 19.5" H x 13" D

**Rough-In:** For 24" lip height, drain center line must be 17" from floor

**Approximate Weight:** 30 lbs. **Color:** White

## REMARKABLE SAVINGS

Water is Precious.

The average swimming pool has 15,000 gallons of water.

Amazingly, one ZeroFlush® urinal can save 3 swimming pools worth of water in a single year.

ZeroFlush® urinals help reduce the growing amount of sewage to save our heavily taxed municipal waste water infrastructure.



## ALL MODELS

### Include:

- Mounting Hardware
- Wall Bracket
- Drain Flange Coupler
- Odor Barrier Liquid
- Insert Key
- Drain Insert
- Installation and Maintenance Instructions

Meets ANSI/ASME A122.19.2.M-1998 and A117.1 (section 605.2) for vitreous china fixtures. IAPMOIGC 161-2000 and ANZIZ125.9-94

# ZERO FLUSH

## ZERO WATER URINALS



[www.zeroflush.com](http://www.zeroflush.com)

ZeroFlush®  
111 W Olive St  
Glendale, WI 53212 USA

Toll Free: (877) 787-5383

Phone: (407) 935-1180

Fax: (407) 935-0001

Phone: (407) 935-1180

Fax: (407) 935-0001

[www.zeroflush.com](http://www.zeroflush.com)

ZeroFlush®  
111 W Olive St  
Glendale, WI 53212 USA

Toll Free: (877) 787-5383

# SIZE MATTERS

OUR SLEEK MODERN DESIGN HELPS REDUCE  
SPLASH AND KEEPS FLOORS DRIER.

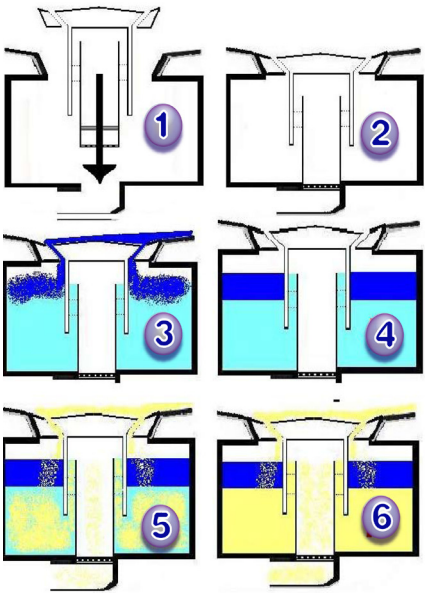


# LARGEST TRAP means more uses! ... averages 15,000 uses before maintenance

Our system's Drain Insert is disposable and easy to remove.

- Largest built-in waste trap of any no water urinal
- Averages 15,000 uses before any maintenance
- No Cartridges
- Free of odor
- No need to add Odor Barrier Oil between insert changes
- Easiest to maintain and clean
- Lowest operational and maintenance cost
- No water or sewer cost
- Quickest return on investment
- All natural ZeroFlush® Odor Barrier
- Improved design reduces splash
- Easy installation and retrofitting
- Water efficiency LEED™ point accumulation
- Vitreous china and stainless steel

## HOW DOES IT WORK?



1. Install Drain Insert
2. Trap complete
3. First, add 32oz. of water. Second, add 12oz. of Odor Barrier Oil
4. Trap ready for use
5. First use
6. Ongoing use

After approximately 15,000 uses, drops of blue Odor Barrier will appear on the insert cover. This indicates it is time to replace the insert and the Odor Barrier liquid.

## ODOR BARRIER REPLACEMENT KIT

- Drain Insert
- Insert Removal Tool
- ZeroFlush® Odor Barrier



# MAINTENANCE AND CLEANING

## Odor Free

ZeroFlush®, zero water urinals are the culmination of proven technology, environmental concern and innovation. Our patented system will give you years of superior odor free performance and trouble free operation, improving total rest room sanitation and hygiene.

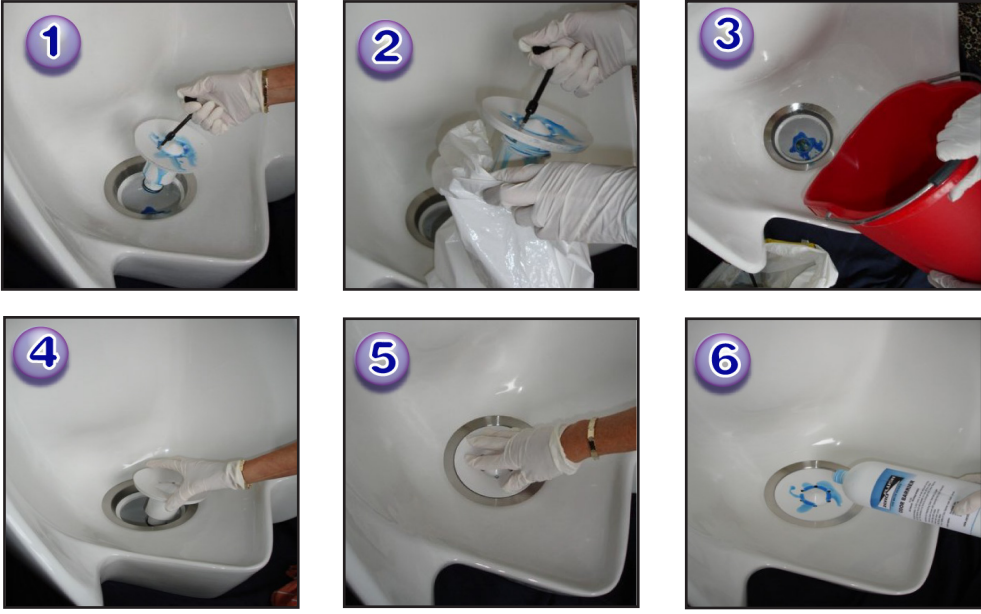
ZeroFlush® has been developed to be the most economical and environmentally friendly zero water consuming urinals in the world today.

## DAILY CLEANING

As with any other urinal (water and no water), ZeroFlush® urinals should be cleaned on a regular basis.

The ZeroFlush® urinals are designed with the maintenance person in mind. Cleaning is very quick and easy.

NO scrubbing with detergents is required or the use of odor masking devices or chemicals.



## Maintenance is a cinch!

Remove the drain insert with the tool provided. You'll notice the remaining odor barrier fluid and any urine inside the waste trap will automatically flush away down the waste pipe. Rinse the waste line with a bucket of water. Install new drain insert into the housing. First pour in 32oz. of Water and then pour in 12oz. of ZeroFlush® Odor Barrier Fluid through the drain insert and the urinal is ready for use. At no time will the person replacing the odor barrier fluid come in contact with urine.

## No More!

Leaky Valves, Hard Water Stains, Urinal Cakes, Multiple Wasteful Flushing, Overflows, Floods or Harsh Chemicals